



**Océ**  
ColorWave® 300  
multifunction  
printer

Jump to One



Wide format color,  
all-in-one

## Jump to One

- One for all: print, copy and scan in color and B&W
- One that saves: reduce floor space and costs
- One for tomorrow: grow your business sustainably

# Jump to One



Océ ColorWave 300 R



Océ ColorWave 300 T

## Océ ColorWave 300 multifunction printer

### Wide format color, all-in-one



Don't waste a bit of precious space. Jump to One. The Océ ColorWave 300 multifunction printer effortlessly handles all your color and B&W print, scan and copy jobs. Neatly collated and stacked documents save even more space.

Designed around your needs and our long understanding of the wide format industry, the Océ ColorWave 300 multifunction printer delivers the ease of use and workflow efficiency of a monochrome system and the versatility of a color printer. It's the first true all-in-one printer for large format users.

# Océ ColorWave 300 multifunction printer

## One for all: print, copy and scan in color and B&W

Print, copy and scan all your technical color and B&W wide format documents on one system. Thanks to the built-in scanner, all functions can be controlled from one simple user panel. Unique Océ technologies, like Océ Color Image Logic, Océ Dynamic Switching and Océ scan and copy templates ensure first-time-right results. Whether you are printing complex GIS drawings or copying detailed B&W CAD documents.

The powerful controller swiftly handles all file formats – HP-GL/2, PDF, DWF, JPEG and many more – and large files without sacrificing speed. Files can be submitted via state-of-the-art drivers and job submission tools.

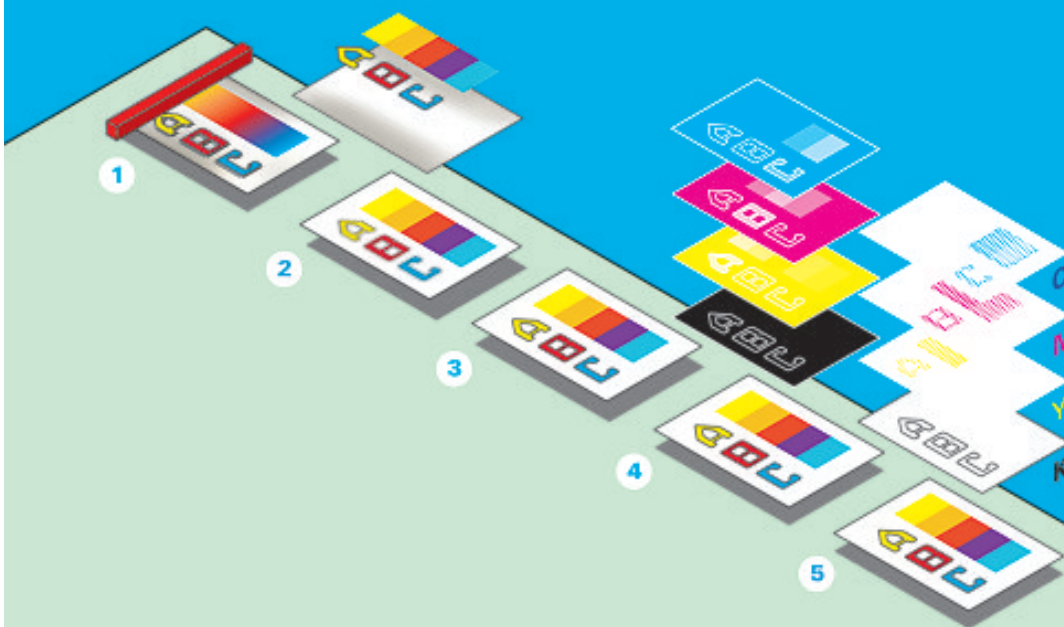
Get further flexibility by printing and scanning to a USB-flash drive. The optional Océ Repro Desk Studio software lets you preview prints to avoid misprints and effortlessly track your print volumes and costs.

The Océ ColorWave 300 multifunction printer is a true all-in-one:

- One system for all your applications
- One system to handle all type of file formats
- One system that can be easily operated by all users
- One system that can handle your large format document needs today and tomorrow

## Superior scan and copy quality with Océ Color Image Logic

- 1 Scanning: scanner efficiently captures the original image
- 2 Background correction: removes unwanted wrinkles and background without affecting critical light colored information
- 3 Filtering: sharpens lines and text
- 4 Color management: matches colors of original to printer ensuring optimal copy quality
- 5 Halftoning: converts image to printable data



# Wide format color, all-in-one



- 1 Efficient scroll & click control panel**  
Océ green button approach. Scroll and click to select templates for routine scanning and copying. Dynamic buttons and color visuals guide you.
- 2 Time saving templates**  
Set up custom templates for copy and scan jobs to save time. Format resolution, color or B&W, file format, destination, etc. Just press a button and start.

- 3 Convenient USB printing & scanning**  
Easily print and scan documents with any USB stick so you don't have to haul stacks of plans around. Ideal for frequently revised documents.
- 4 Neat document stacking**  
Dynamic Anti-Curl (DAC) feature and air separation keeps different sizes and types of media neatly collated and stacked on top delivery tray. No extra table required.

- 5 Superior color and B&W scanning with Océ Color Image Logic**  
Océ Color Image Logic technology automatically compensates for wrinkles and background without affecting information in light colors.
- 6 High print quality ensured with Océ Dynamic Switching Technology**  
Automatically determines the best printing mode for each part of the plot. Maximizes productivity for mixed drawings.
- 7 Uninterrupted operation**  
Print, copy and scan at the same time. Add ink and paper while system is running. Easily load new media. Paper is fed, cut and sized – automatically.
- 8 Efficient workflow**  
Océ Express WebTools provides a web-based job submitter so users can print from any desktop without installing additional software. Control costs with optional Océ Repro Desk Studio.

## One that saves: reduce floor space and costs

Save on floor space by replacing printers and scanners with a single system that can handle both color and B&W. The optional top delivery tray eliminates the need for an extra table. Neatly stacked copies/prints can be easily picked up from the front. Media and ink can be loaded from the front minimizes the operational footprint.

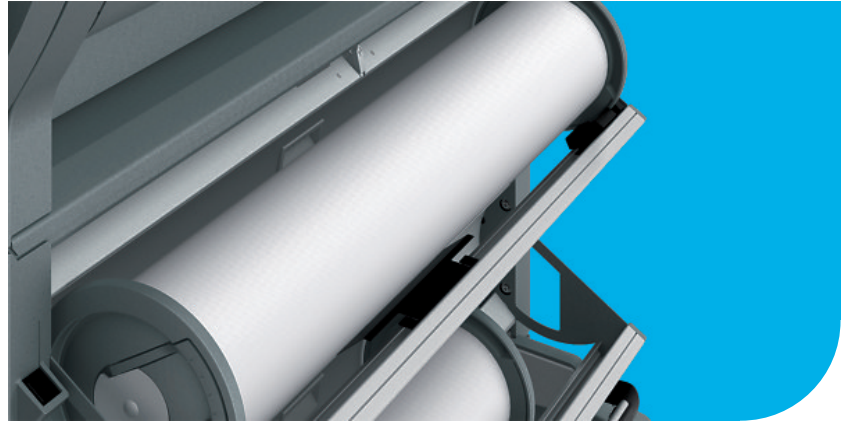
Save on costs by investing in one system to do color and B&W tasks. Working with an all-in-one system reduces supplies and IT support. The compact design and inkjet technology drastically reduces energy consumption compared to conventional B&W systems.

## One for tomorrow: grow your business sustainably

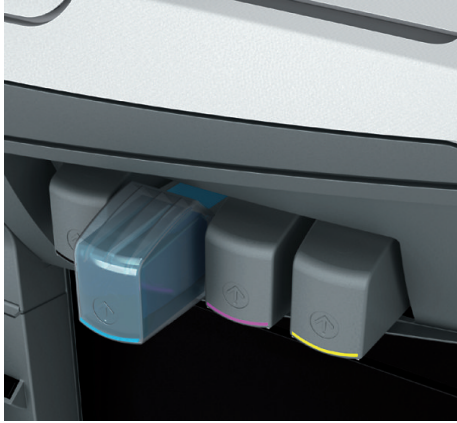
Increase your competitive edge by applying monochrome or color as needed to enhance documents and make your company stand out. The Océ ColorWave 300 multifunction printer system delivers the ease of use and workflow efficiency of an Océ B&W system and the versatility of a color printer.

The Océ ColorWave 300 multifunction printer is proof of your commitment to sustainability. Waste is eliminated by using automatic original and media size recognition and image positioning features to avoid misprints. And your working environment is not affected by ozone, dust or odors.





General	
Description	Wide format color, all-in-one (single footprint print/copy/scan/stack system)
Type	Thermal inkjet with Océ Dynamic Switching
Speed	B&W: 41 seconds/Ao; color: 63 seconds/Ao
Warm-up time	Instant on
Configurations	Océ ColorWave® 300 R (includes receiving tray) Océ ColorWave® 300 T (includes top delivery tray and receiving tray)*
Roll options	2 rolls (standard)
Output delivery	Front-accessible receiving tray Top delivery tray with dynamic anti-curl feature, stacks up to 50 sheets depending on media type and size*
Certifications	ENERGY STAR®, TuV GS, CETECOM, CE, UL, cUL, CB, FCC, RoHS, FEMP
Printer	
Print resolution	True: 600 x 600 dpi
Paper capacity	Up to 120 m per roll, standard 2 rolls
Output sizes width	279 mm - 914 mm
Output sizes length	210 mm - 45 m (might influence side margins when > 5 m)
Paper weight	56 g/m <sup>2</sup> - 175 g/m <sup>2</sup>
Media type (www.mediaguide.oce.com)	Uncoated papers, recycled papers, coated papers, transparent papers, photopapers and films
Controller	
Controller type	Embedded PowerM controller with Windows XP Embedded
Memory	1 GB
Hard drive	160 GB
Page description language	HP-GL, HP-GL/2, TIFF, JPEG, DWF, Adobe® PS/PDF (option) CALS, NIFF, NIRS, ASCII, CalComp 906/907/951, C4
Scanner	
Scanner type	Contact Image Sensor (CIS) with Océ Color Image Logic® technology
Scan resolution	Optical resolution 600 dpi x 600 dpi
Scan speed	Up to 11.7 m/min (monochrome), up to 3.9 m/min (color)
Scan format	TIFF, PDF (PDF/A), JPEG, Multipage TIFF & PDF/A, CALS
Scan destination	Local USB flash drive, controller, network via FTP or SMB
Original size width / length	208 mm - 914 mm / 208 mm - 16000 mm
Original thickness	Up to 0.8 mm (non rigid media)
Scaling	Scale to standard format and custom scale 10 % - 1000 %
Preset modes	Color: artwork, line/text, map, photo Grayscale/B&W: line/text, colored original, photo, blueprint, dark original
Print, copy and scan workflow	
General workflow	Concurrent print, copy, scan and file processing
Submission	Single files: local USB flash drive, Microsoft® certified Océ Windows® driver, Océ PostScript3 driver Sets of files: integrated web-based job submission Océ Publisher Express
Job management	Océ Express WebTools: single interface to view and control the system via an Internet browser without installing additional software Monitor and manage the system status, settings, network configurations, updates. Includes personal Smart Inbox for organizing print jobs
Accounting	Océ Repro Desk Studio (option): for registering print, copy and scan activities
Templates	Four user-defined copy & scan templates. Enables recurring tasks to be performed at the touch of a single button



**Options**

Hardware

Software

**Network information**

Client OS support

Standard interface

Network protocols

Printing protocols

Scanning protocols

Security

**Environmental data**

Power consumption active mode (printing)

Power consumption ready mode (standby)

Power consumption sleep mode

Power requirements (V/Hz/A)

Energy consumption per print

Sound level (active/ready)

Ozone concentrations

Recyclability hardware

Recyclability ink tanks

Size engine (printer + scanner) (WxDxH)

Size scanner (WxDxH)

Weight print engine

Weight scanner

Weight top delivery tray\*

**Supplies**

Consumable type

Size

**Options**

Océ Scanner Express (integrated on top of the printer for copying and scanning)  
Top delivery tray with dynamic anti-curl feature: for stacking of different media types and sizes\*

Adobe® PostScript® 3/PDF file interpreter. Enables the submission of PDF files with USB flash drive or job submission tools directly to the printer

Océ Repro Desk Studio: for printing to multiple wide format devices, viewing and cost tracking

Océ Account Center: featuring customized accounting fields and copy/print/scan lock out

Océ Windows driver for Windows® Vista (32 & 64bits), XP and Server 2003. Windows® Terminal Server, Citrix Metaframe and presentation server

Océ Postscript® 3 driver for Windows XP® and Server 2003. MacOS v9, OSX

Océ Express WebTools for Windows® Internet Explorer® and Mozilla® Firefox®

Ethernet 100 Mb/s, 1 Gb/s

TCP/IP, IPv6, IPsec, IPX/SPX, Windows® APIPA

LPR, Novell® NDPS, FTP

FTP, SMB

Electronic file shredding permanently removes all traces of deleted jobs on the controller\*

Complies with DoD 522-22M standard

IPsec secures Internet Protocol communications between the client and the printer\*

Engine (printer + scanner): 201 W, controller: 39 W

Engine (printer + scanner): 146 W, controller: 39 W

Engine (printer + scanner): 3 W, controller: ENERGY STAR® <1;15 W

100 V - 240 V, 50/60 Hz, 9-4 A

34 Wh calculated average based on an A0-size print and EPA ENERGY STAR® TEC method

61 dB (A) / 51 dB (A)

None

Designed to be upcycled or recycled. Engine made of steel and recyclable plastics

Made of recyclable plastics polyethylene and polypropylene

1978 x 786 x 1280 mm (including scanner, receiving tray and user panel)

1978 x 916 x 1720 mm (including scanner, top delivery tray, receiving tray and user panel)

109.7 cm x 30.8 cm x 14 cm (fits on top of print engine)

180 kg

24.5 kg

37 kg

**Supplies**

Océ high density aqueous ink (black: pigment, color: dye)

Ink tank size: 180 ml - 400 ml

\* available soon

# Beyond the Ordinary



## Printing for Professionals

Professionals everywhere look to Océ for digital printing and document management. In the office, Océ systems keep the information of business and government flowing. In manufacturing, architecture, engineering, and construction, Océ wide-format printers set the standard, while our display graphics systems help people produce banners, billboards, and other large, colorful applications. In corporate print facilities, marketing service bureaus, and the graphic arts industry, Océ systems print transaction documents, mailings, newspapers, manuals, and books—on demand and at the highest speeds. And Océ Business Services manages the complete document workflows of customers around the world. It all helps you go “Beyond the Ordinary” in printing and document management.

© 2009 Océ. Illustrations and specifications do not necessarily apply to product and services offered in each local market. Technical specifications are subject to change without prior notice. Océ, Océ ColorWave 300<sup>®</sup> multifunction printer, Océ Express WebTools, Océ Publisher Express and Océ Color Image Logic are registered trademarks of Océ-Technologies B.V. Adobe<sup>®</sup> and PostScript<sup>®</sup> 3 are registered trademarks of Adobe<sup>®</sup> Systems Incorporated. Macintosh<sup>®</sup> is a registered trademark of Apple<sup>®</sup> Computer, Inc. Microsoft<sup>®</sup> and Windows<sup>®</sup> are registered trademarks or trademarks of Microsoft<sup>®</sup> Corporation in the United States and/or other countries. AutoCAD<sup>®</sup> is a registered trademark of Autodesk. Mozilla Firefox<sup>®</sup> is a registered trademark of The Mozilla Foundation. ENERGY STAR<sup>®</sup> is a registered trademark of the U.S. Environmental Protection Agency (EPA). All other trademarks are the properties of their respective owners.

For information and services, visit us at:

**[www.oce.com](http://www.oce.com)**